

KS Consulting Limited

Company Profile

About Us

KS Consulting Limited is an international boutique, independent consultancy specialising in digitalisation, BIM, Digital Twins and information management for the Built and Natural Environment.

We specialise in delivering exceptional support to design, construction and operation in real estate and infrastructure sectors through a combination of strategic insight, project management and technological solutions.

Established by our Director, Kieran Stapleton, in October 2021, we have assisted in the transformation of businesses and the optimisation of project value worldwide.

Our values of independence, integrity and rigour reflect our inherent culture and modus operandi in dealing with our clients, collaborators, partners and customers. We consistently strive to maintain and enhance these values in everything we undertake.

Our current footprint and reach is the platform to deliver value centric solutions to our clients and customers. We are agile and willing to create new footprints for our prospective clients.



What we do

We support Clients, Developers, Contractors, Specialist Suppliers and Consultants with four facets of our business.

We mature organisations through our Strategy & Advisory services by providing in depth strategic insights, enablement and assurance at project, programme, portfolio or enterprise level.

We enhance and troubleshoot projects through our Project Delivery services from cradle to cradle across the project and asset lifecycle.

We enable innovation and purposeful digitalisation through our Digital Technologies services to provide better project benefits and business outcomes.

We mentor and develop competence through our Learning & Development services to upskill individuals and businesses in Project, Programme and Portfolio Management, Digital Engineering, BIM and Information Management

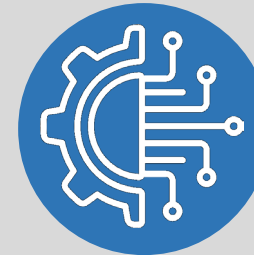
Strategy & Advisory



Project Delivery



Digital Technologies



Learning & Development



Strategy & Advisory

Providing the right information, to the right people, at the right time can help make better decisions, improve operational and project outcomes, and optimise project, social and environmental value. Leveraging data as this strategic and operational asset through digitalisation of the Built and Natural Environment is no straightforward task.

We adopt a human centric approach to everything we do. We are independent, impartial and software agnostic. Our Strategy & Advisory services entail a holistic review of people, process and technology within the context of business operations. We do not work in Siloes and appreciate the complex nature of Client organisations and decisions. We work with the Clients to simplify complexity and equip them with the capability and confidence to overcome their present and future challenges.

Strategy



Digital Strategy and Implementation Planning



Smart Assets and Asset Management

Enablement



Capability Development



Data Ontologies and Information Frameworks



Business Case Development

Assurance



Forensic, Peer Review and Troubleshooting



Maturity Assessment



Readiness Assessment and Support

Project Delivery

Adopting a digital approach to project delivery is the underpinning to leveraging data, enhancing collaboration and improving project outcomes. Ensuring the right processes are in place can be the difference between enhancing or compromising project delivery. Misaligned strategic visions and project expectations, incongruent workflows and subjective or inconsistent reporting can compromise project outcomes.

We apply holistic processes which align with international standards to optimise the creation, management and use of data and information to enhance project delivery. Our Project Delivery services enable us to provide assurance to our Clients at every stage throughout the project lifecycle.



Information Management and BIM Auditor



4D Planning, Reporting and Simulation



Integrated Reporting, Project Controls and Progress Tracking



BIM and Contracts Advisory



Lifecycle BIM / Digital / Information Management



5D Modelling and Reporting

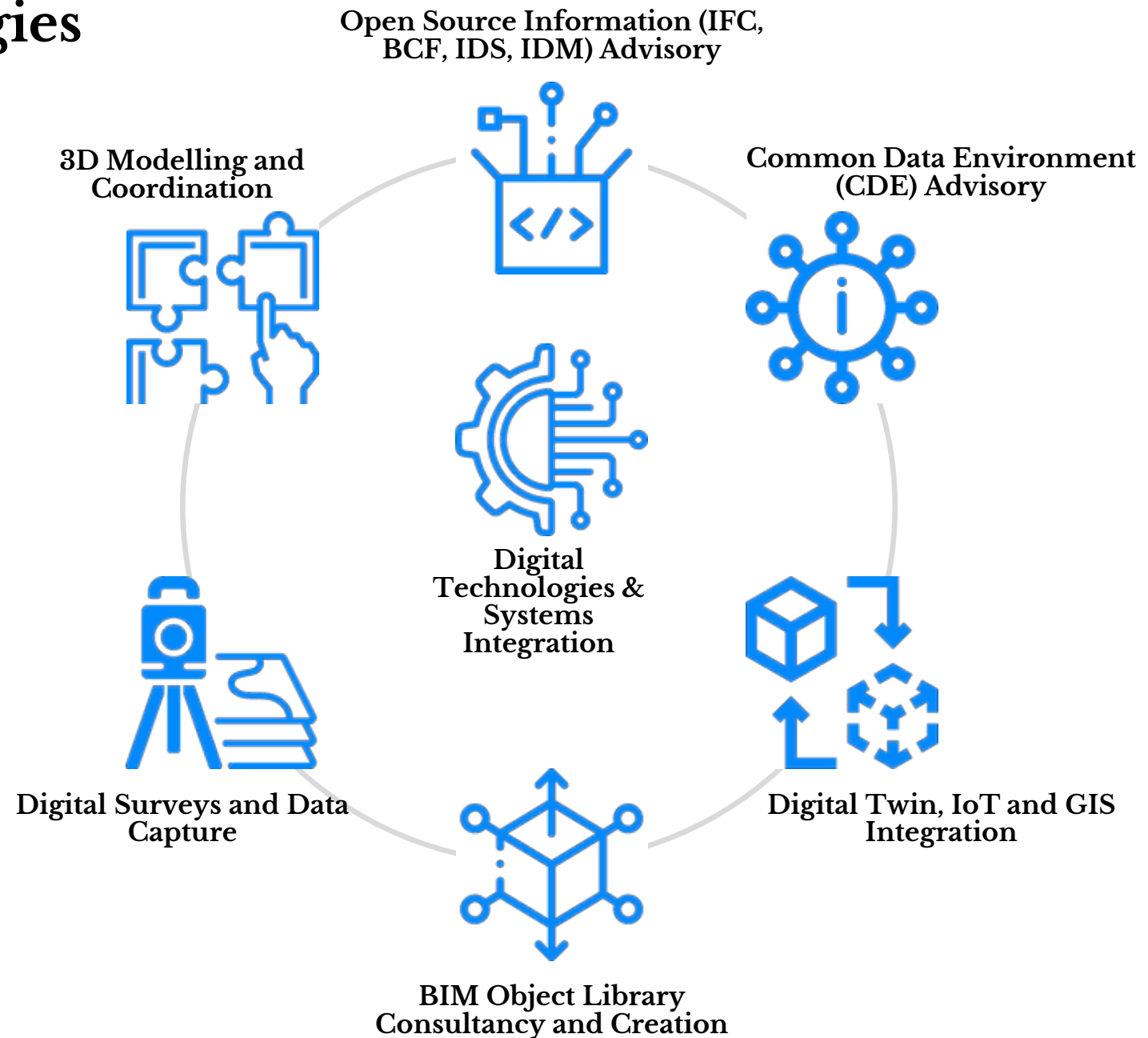


Data Analytics and Automation

Digital Technologies

Underpinning the processes and equipping people with the optimum digital technologies is vital to optimising the value of your data and delivery of your projects. Time spent procuring, cultivating and translating the right data because of inoperability, scarcity, incorrect structures, ambiguity, inaccessibility or even incompleteness can negatively impact its value, dissuade users and lead the users to start questioning the efficacy of the processes.

We are independent, impartial and software agnostic. We believe in interoperable, open and reliable information which can be shared and accessed in a collaborative and reliable way. Our Digital Technologies productised services support Clients in project execution.



Learning & Development

Adopting new strategies, processes and technologies can be daunting for anyone. Our Learning and Development services, available to businesses and individuals, can guide you through the learning journey.

We help Clients upskill and improve their capability relating to Project, Programme and Portfolio Management, Digital Engineering, BIM and Information Management. Our Learning & Development services are available for independent learners and businesses.

As well as our modular learning products, we also support Clients in the development custom learning programmes to suit their business needs. Our modular learning products are clustered into three categories, Maturity, Applied and Technology.

Maturity Modules



BIM and Digital Maturity Workshop

Introduction to BIM Use Cases and Technology

BIM Concepts and What They Mean

International BIM Standards and How They Are Applied

APM Project Fundamentals Qualification

APM Project Management Qualification

APM Project Professional Qualification

Asian Cities Programme

Applied Modules



Integrating BIM into NEC Contracts

BIM and Digitalisation for Project Management and Controls

BIM and Digitalisation for Commercial Management

BIM and Digitalisation for Asset Management

BIM and Digitalisation for Programme Management

BIM and Digitalisation for Construction Management

BIM and Digitalisation for Clients and Developers

Technology Modules



Synchro OpenViewer - Basic

Synchro 4D - Basic

Synchro 4D - Advanced

Autodesk Revit - Basic

Autodesk Revit - Advanced

Autodesk Navisworks Freedom - Basic

Autodesk Navisworks Manage - Advanced

Autodesk Construction Cloud Docs - Basic

Autodesk Construction Cloud Build - Basic

Comprehensive List of Services

Strategy & Advisory Services

- Digital Strategy and Implementation Planning
- Smart Buildings Advisory
- Asset Management Advisory
- Organisational Capability Development
- Data Ontologies and Information Frameworks
- Business Case Development
- Forensic, Peer Review and Troubleshooting
- Digital Maturity Assessment
- Digital Readiness Assessment and Support
- AI Advisory and Strategy
- Net Zero / Zero Carbon Data Insights
- Building Safety Advisory
- Golden Thread Assurance and Advisory
- Embodied Carbon Data Insights
- Asset Information Management Strategy
- Digital Project Management Office Advisory
- Information Security Advisory
- Digital Twin Strategy and Advisory
- Digital Engineering Strategy and Advisory
- Process Integration and Optimisation through Systems Thinking
- BIM for FM Advisory and Support

Project Delivery Services

- Information Management and BIM Auditor Support
- 4D Planning, Reporting and Simulation
- Integrated Reporting, Project Controls and Progress Tracking
- BIM and Contracts Advisory
- Contractualisation of BIM and Digital using NEC4
- Contractualisation of BIM and Digital for Standard Forms of Contract
- Lifecycle BIM / Digital / Information Management Support
- 5D Modelling and Reporting
- Data Analytics and Automation
- Programme Translation and Migration
- Quantitative schedule risk analysis
- Handover Information Management Support and Validation
- Project Information Validation and Verification
- Asset Information Validation and Verification
- Independent Project Reviews
- Troubleshooting and Peer Review
- Project Mentoring

Digital Technologies Services

- Open Source Information (IFC, BCF, IDS, IDM) Advisory
- Digital Technologies & Systems Integration
- Common Data Environment (CDE) Advisory for Capital Works
- Common Data Environment (CDE) Advisory for Asset, Maintenance and Operations
- Digital Twin support
- IoT and GIS Integration
- BIM Object Library Consultancy and Creation
- Digital Surveys and Data Capture
- 3D Modelling and Coordination (for small and medium sized projects)
- PropTech Consulting
- ConTech Consulting
- AI Applications Consulting
- Scan to BIM and Reality Modelling
- Computational Design Automation Support
- PowerBi Support
- Extended Reality (Virtual Reality / Mixed Reality / Augmented Reality) Implementation Support

Learning & Development Services

- BIM and Digital Maturity Workshop
- Introduction to BIM Use Cases and Technology
- BIM Concepts and What They Mean
- International BIM Standards and How They Are Applied
- APM Project Fundamentals Qualification
- APM Project Management Qualification
- APM Project Professional Qualification
- Asian Cities Programme
- Integrating BIM into NEC Contracts
- BIM and Digitalisation for Project Management and Controls
- BIM and Digitalisation for Commercial Management
- BIM and Digitalisation for Asset Management
- BIM and Digitalisation for Programme Management
- BIM and Digitalisation for Construction Management
- BIM and Digitalisation for Clients and Developers
- Bespoke Course Development
- Learning and Development Mentorship
- Technology Training Modules

Our Clients



Project Experience

MTR Capital Works Business Unit Portfolio BIM and Digital Advisory

Client:

Mass Transit Railway Corporation Limited (MTRC)

Nature of Service:

Strategy & Advisory

Business nature of Client:

Infrastructure, Transport

Scope:

Digital and BIM advisory services covering the implementation of BIM as a Contractual Document in NEC and Standard Forms of Contracts, development and implementation of Scope documents (including development of General Specifications and Particular Specifications) for Works totaling HK\$128 Billion.

The development of the associated Scope entailed capturing capital and operational information requirements and resulting deliverables, defining and optimising client to supply chain working processes and integration with Project Management Office functions.

The service contributed to the Client achieving ISO19650:1 and 2 certification, becoming the first Client in Asia Pacific to receive it.



Digital Asset Information Strategy

Client:
Country Garden Pacific View (CGPV)

Nature of Service:
Strategy & Advisory

Business nature of Client:
Property Developer, Retail, Sport

Scope:
Development of a strategy and overseeing the creation of a digital asset information model, comprising a coordinated 3D geometry of the building fabric, structure and services, combined with non-graphical data on the maintainable building assets.

The project was developed in CGPV's Forest City smart city development in South West Johor which involves the development of a similar approach which will be replicated across the entire development.*



*Team experience prior to Business Establishment

M+ Museum of Art

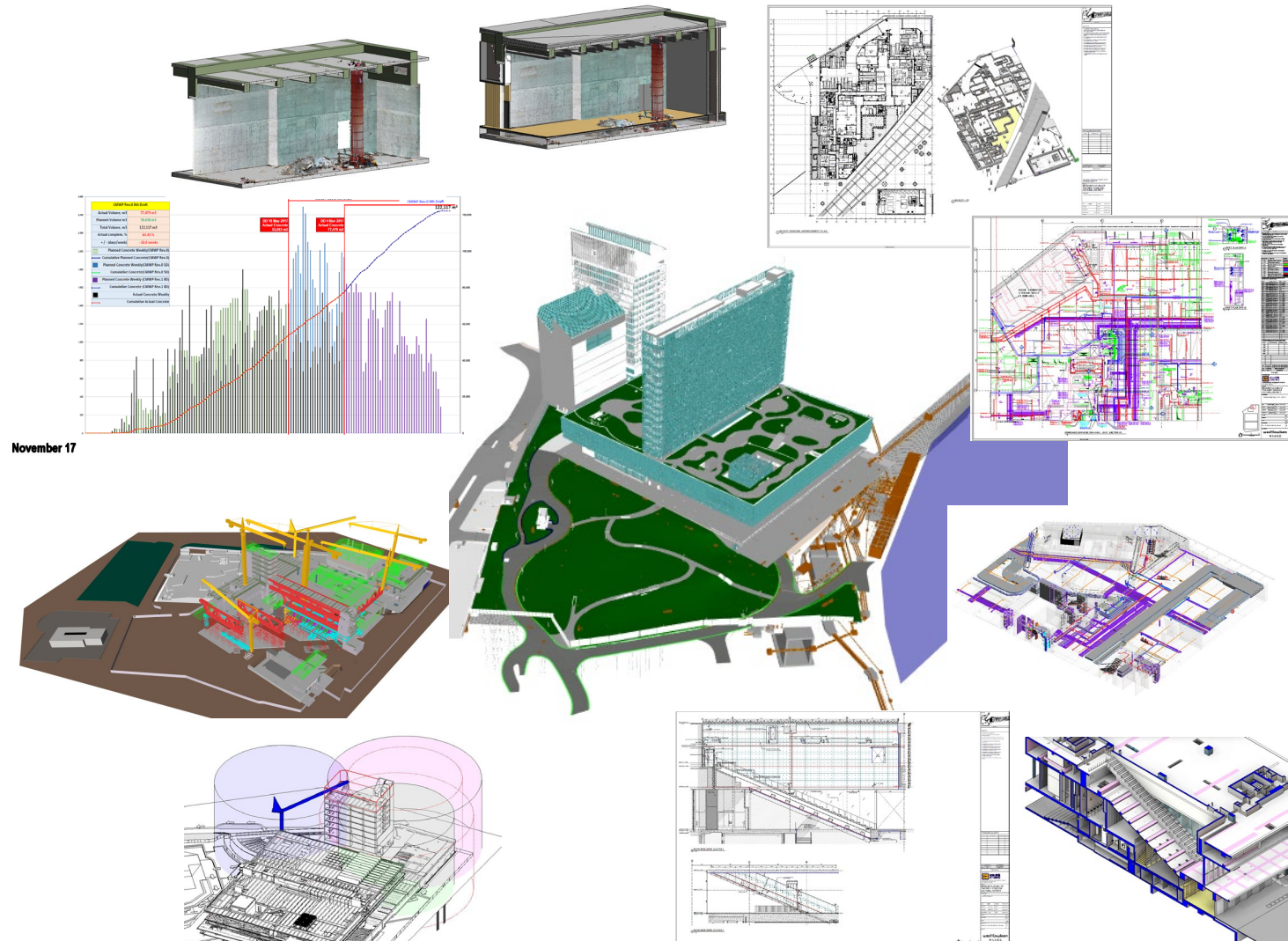
Client:
Hsin Chong Construction Company

Nature of Service:
Project Delivery

Business nature of Client:
Main Contractor

Scope:
Acted as BIM Manager for the construction phase. Based on site since construction activities commenced this highly responsible role involved the coordination with the contractor's discipline leads and subcontractors review and analysis of design team information and the development of production information including Combined Services Drawings (CSDs) and Combined Builders Works Drawings (CBWDs) from the digital 3D modelling processes.

In addition, we led the development of 4D construction simulation models and advised on the structure of models and data for the Asset Information Model (AIM).*



*Team experience prior to Business Establishment

Forest City Landmark Building Phase 1

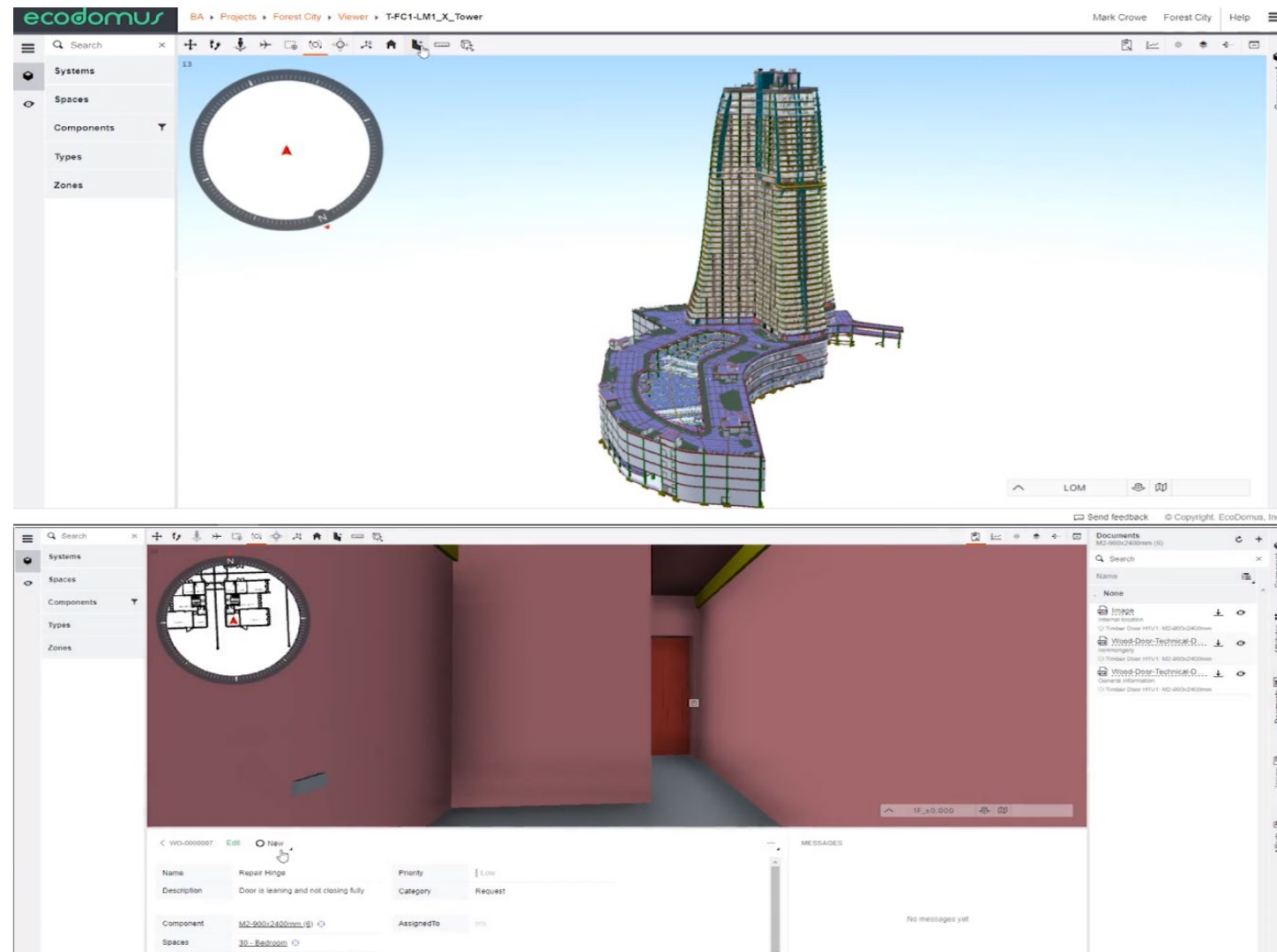
Client:
Country Garden Pacific View (CGPV)

Nature of Service:
Project Delivery

Business nature of Client:
Property Developer, Retail, Sport

Scope:
We worked closely with the project management, modelling and contractor teams to devise a strategy for the development of the geometric models and classification of asset data and means to combine this in a holistic digital information model for improved management of the building and infrastructure in use.

The subsequent structured development of coordinated 3D geometric models and data for the Landmark Building (Phase 1) allowed integration with future FM systems (CAFM and CMMS) following handover.*



*Team experience prior to Business Establishment

Confidential Multi Use Events Space

Client:
Confidential

Nature of Service:
Project Delivery

Business nature of Client:
Retail, Entertainment

Scope:
A retrofit of an existing space to develop a multi use events space, working with dispersed teams around the globe.

We carried out Lidar scanning at pre-demolition, pre-construction and upon completion of construction, then developed, checked and aligned the Project Information Model with the captured scan data.

Following which independent design review and coordination checking was carried out allowing the project delivery team to mitigate risks and optimize schedule.



Black Point Power Station CCGT D2

Client:

China Light and Power (CLP) Power
Hong Kong Limited

Nature of Service:

Project Delivery

Business nature of Client:

Utilities, Infrastructure

Scope:

Acted as the Client's BIM Manager for an EPC project in Hong Kong SAR China.

This entailed conducting of BIM workshops, development Exchange Information Requirements, reviewing the prospective Contractor's Pre-Contract BIM Execution Plan, reviewing and auditing against the winning Contractor's Post-Contract BIM Execution Plan, development of the Asset Information Model Plan and subsequent Model Review and Turnover.*



*Team experience prior to Business Establishment

Asset digitalization of government assets within New Territories East

Client:

Electrical and Mechanical Services
Department of the Government of the
Hong Kong Special Administrative
Region (EMSD)

Nature of Service:

Digital Technologies

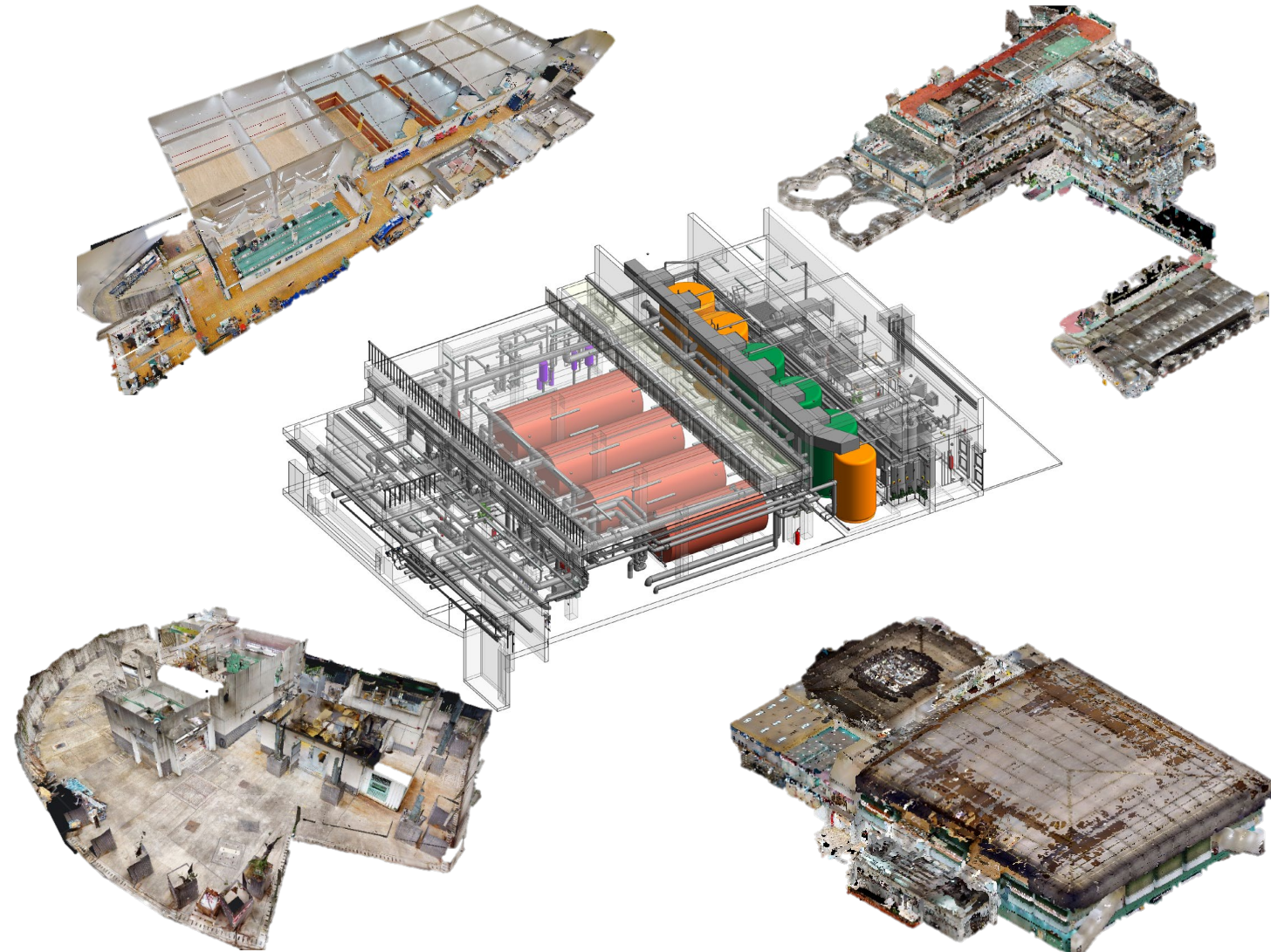
Business nature of Client:

Institutional, Government

Scope:

To further enhance the performance of E&M systems, we were engaged by EMSD to work with the Government Representative to conduct the digitalisation work of E&M assets at Ma On Shan 108 Sewage Pumping Station, Hong Kong Cultural Centre, Shatin Swimming Pool, Ho Man Tin Sports Centre, Yuen Wo Road Sports Centre and Hong Kong Heritage Museum.

The work of asset digitalisation included site surveying, construction of asset information models, supply and installation of zone codes, migration of data to the Asset Information Management Platform and subsequent audit check on the asset information.*



*Team experience prior to Business Establishment

Interior Fit-out of SOGO Flagship in Kai Tak

Client:
Macros Construction Limited

Nature of Service:
Digital Technologies

Business nature of Client:
Retail

Scope:
Construction side BIM authoring support for the Fit-out Contractor for the fit out of lift and common areas, retail space and supermarket of the Client's new retail space in Hong Kong.

Validation of As-fit Condition carried out through photogrammetric survey and development of Asset Information Model for handover to the End User.



Former North Kowloon Magistracy BIM for FM Heritage Project

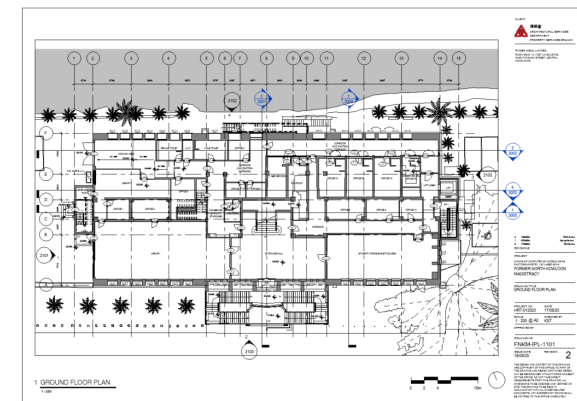
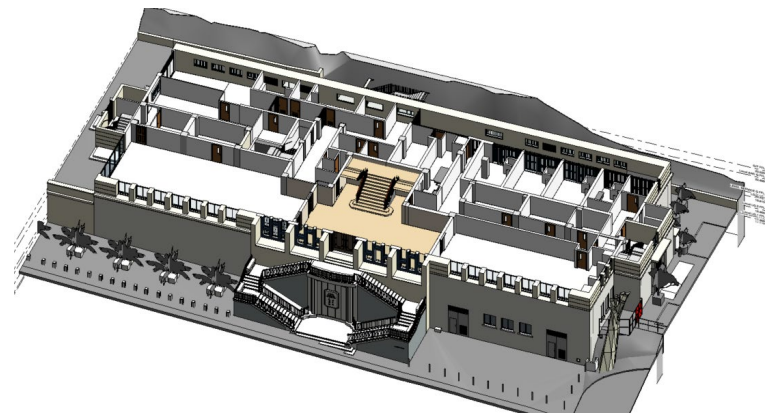
Client:
Architectural Services Department
(Arch SD)

Nature of Service:
Digital Technologies

Business nature of Client:
Institutional, Government

Scope:
The Former North Kowloon Magistracy was constructed in 1960 and is a representative example of civic buildings of this period. We provided a detailed recording of the site and produced Building Information Models (BIM) using an unmanned aircraft system and close range photogrammetry to capture and preserve a local heritage site for ArchSD.

The resultant BIM was then used to update their statutory records relating to GFA and SFA for the Client's operational and future asset space management process.*



*Team experience prior to Business Establishment

BIM for FM Pilot Project

Client:

Mass Transit Railway Corporation Limited (MTRC)

Nature of Service:

Digital Technologies

Business nature of Client:

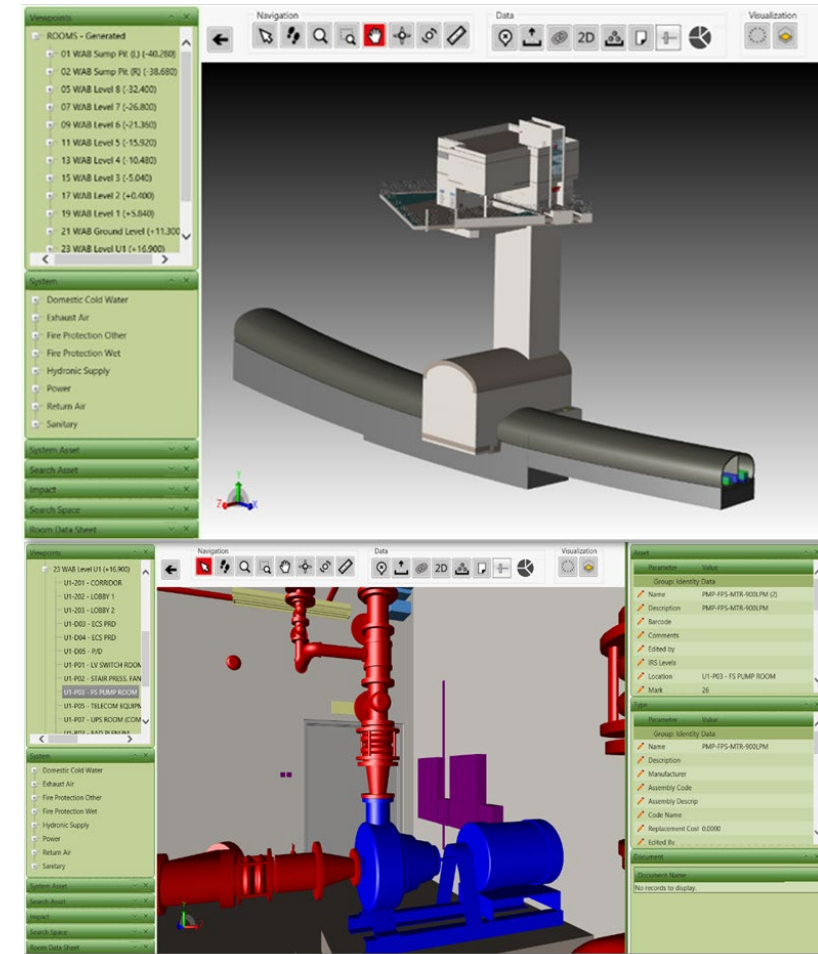
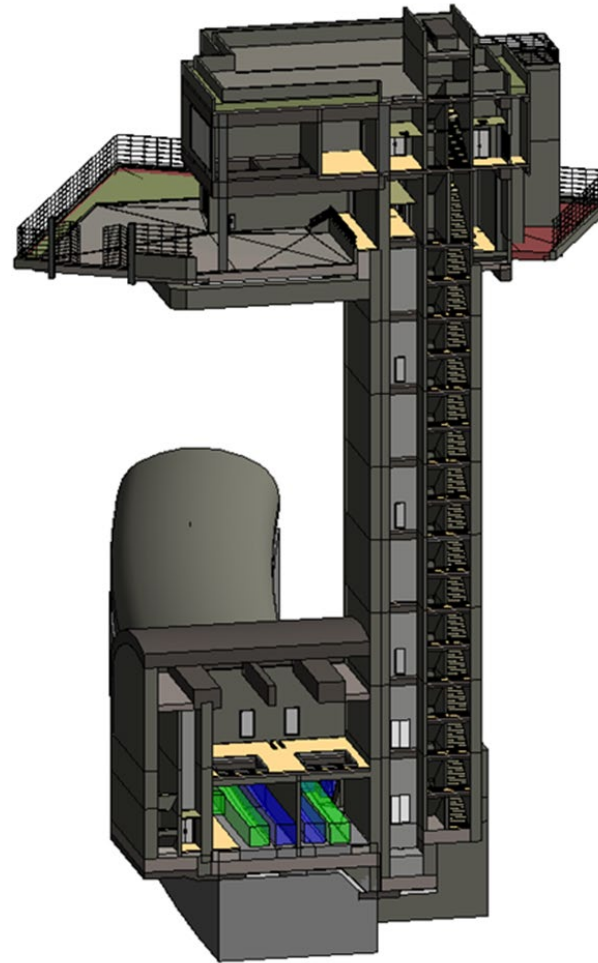
Infrastructure, Transport

Scope:

A pilot project undertaken on behalf of MTRC. The purpose was to investigate the feasibility and business case for collating and linking asset data from various 3D digital and 2D conventional formats derived from ongoing rail infrastructure projects and migrating this data to the corporation's asset and facilities management systems.

The study also investigated the business case and return on investment for adopting this approach on future projects.

The project served as a demonstrable proof of concept and delivery for the further expansion of the BIM for FM approach across the Corporation and demonstrates the feasibility of applying BIM methodologies to infrastructure projects.*



*Team experience prior to Business Establishment

Project Governance and Controls Maturity Training

Client:
Perri Projects Pty Ltd

Nature of Service:
Learning & Development

Business nature of Client:
Property Developer

Scope:
Organisational readiness training relating to Business Case, Stakeholder Management and Requirements Management.

We provided a facilitated learning program which included eLearning and facilitated training via MS Teams to mature a medium sized Property Developer based in Melbourne, Australia as part of their internal refresh and change management program.



Contact Us

If you are interested in working with us, please reach out to our Director, Kieran Stapleton.

Email: Kieran@ksconsultinglimited.com

Telephone: +852 6531 2334

Website: <https://www.ksconsultinglimited.com/>